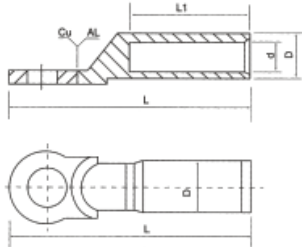


DTL Copper-aluminium Connecting Terminals

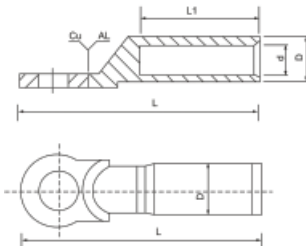
Specification



DTL-2



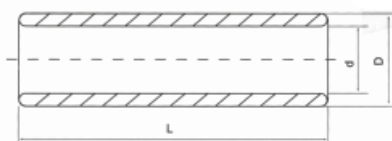
DTL-1



GT-1



GT-2



TYPE	φ	D	d	L	L1
DTL-2-16	13	16	5.5	87	42
DTL-2-25	13	16	6.5	87	42
DTL-2-35	13	16	8	87	42
DTL-2-50	13	20	9	87	43
DTL-2-70	13	20	11	87	43
DTL-2-95	13	20	12.5	87	43
DTL-2-120	13	25	13.5	111	60
DTL-2-150	13	25	15.5	111	60
DTL-2-185	13	32	17.5	116	60
DTL-2-240	13	32	19.5	116	60
DTL-2-300	13	34	22.5	120	62

Type	φ	D	d	L	L1	B
DTL-1-10	8.5	11	6	68	28	16
DTL-1-16	8.5	11	6	70	30	16
DTL-1-25	8.5	12	7	75	34	18
DTL-1-35	10.5	14	8.5	85	38	20.5
DTL-1-50	10.5	16	9.8	90	40	23
DTL-1-70	12.5	18	11.5	102	48	26
DTL-1-95	12.5	21	13.5	112	50	28
DTL-1-120	14.5	23	15	120	53	30
DTL-1-150	14.5	25	16.5	126	56	34
DTL-1-185	16.5	27	18.5	133	58	37
DTL-1-240	16.5	30	21	140	60	40
DTL-1-300	21	34	23.5	160	65	50
DTL-1-400	21	38	27	170	70	50
DTL-1-500	21	47	29	225	75	60
DTL-1-630	-	54	35	245	80	80
DTL-1-800	-	60	38	270	90	100

GTY Copper Connecting Tube

Type		D(mm)	d(mm)	L(mm)
GT1-1.5	GT2-1.5	3.7	1.8	20
GT1-2.5	GT2-2.5	4	2.5	20
GT1-4	GT2-4	4.8	3.1	20
GT1-5.5	GT2-5.5	5.5	3.8	25
GT1-10	GT2-10	6.8	4.8	30
GT1-16	GT2-16	7.5	5.5	35
GT1-25	GT2-25	9	7	40
GT1-35	GT2-35	10.5	8.2	45
GT1-50	GT2-50	12.5	9.8	50
GT1-70	GT2-70	14.5	11.5	55
GT1-95	GT2-95	17.5	13.5	60
GT1-120	GT2-120	19.5	15	65
GT1-150	GT2-150	21	16.5	70
GT1-185	GT2-185	23.5	18.5	75
GT1-240	GT2-240	26.5	21	80
GT1-300	GT2-300	30	24	85
GT1-400	GT2-400	34	27	90
GT1-500	GT2-500	38	30	100
GT1-630	GT2-630	45	35	110
GT1-800	GT2-800	50	39	150
GT1-1000	GT2-1000	56	44	170